

# Private Landscape Restoration for Malleefowl at Mali Dunes, Victoria



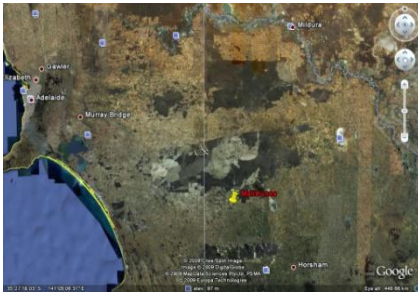
## Short Facts

1552 acres of mallee in the Yanac area in western Victoria, 10km south of the Big Desert Wilderness Park & 25 km east of the SA border.

Owned by Sue Hayman-Fox & Bernie Fox since May 2003.

Community Land Management (CLM) project site.

Fully covenanted with the Trust for Nature.



## Restoration work

Direct seeding in eroding central area by Greening Australia in May 2003 using bitumen mulch.



Extensive plantings & direct seeding across northerly pastures by Project Hindmarsh in 2004, 2009 & 2010.



Continued habitat enhancement with small private community plantings each year.



Direct seeding with polymer film by Greening Australia in July 2011.



## Opportunity, Challenges & Aspirations

Mali Dunes provided an opportunity to link a remnant Bushland Reserve of 600 acres with an uncleared private remnant of 800 acres linked to the Big Desert Wilderness by good quality road reservations.

The challenge was to restore a landscape that had been 'chained & rolled' as recent as 1995.

The aspiration was to reintroduce the Malleefowl once the habitat had been improved to 'suitable quality'.



Re-growth vegetation included large amounts of *Acacia calamifolia* and all plantings have supplemented this.

## Malleefowl appear

The bird had been reported in the area over many years but was seen occasionally. In December 2006 the first Malleefowl was sighted at Mali Dunes to everyone's excitement ....



.... And they have remained ....



.... along with Bernie and Sue.



1997 aerial photo of Mali Dunes showing Bushland Reserve top right and private remnant below.

## Fauna & Reptile Monitoring

Annual pitfall and cage trapping has been undertaken courtesy of ecologists Clive Crouch and Ann Williamson. It is showing an improving diversity and as the habitat improves.



## Visitors and Helpers

It was always planned to have visitors come and see what is happening and their help is always welcome. We have hosted Landcare Groups, Victorian National Parks Association, Field Nats groups, BOCA, Victorian Mammal Survey Group, Wettenhall Foundation members, Wimmera CMA and the Victorian Malleefowl Recovery Group.



Our thanks to our supporters including Clive Crouch, Ann Williamson, Richard Morphet, Ian Pratchett and many other volunteers.

